

El amor brujo

Manuel de Falla

Introducción y Escena.

Allegro furioso ma non troppo vivo. (♩=132)

Musical score for the first section of 'El amor brujo'. It consists of five staves of music in bass clef, 3/4 time. The first staff includes dynamic markings *f*, *ff*, and *sempre simile*. Measure numbers 5, 9, and 13 are indicated. The section ends with a double bar line and the word 'Attacca'.

En la Cueva. La noche.

1 Tranquillo e misterioso (♩=72)

Musical score for the second section of 'El amor brujo'. It consists of five staves of music in bass clef, 3/4 time. The first staff includes a first ending bracket labeled '1' and dynamic marking *ppp*. The second staff includes *ppp sempre* and *f dim.*. The third staff includes a second ending bracket labeled '2' and dynamic marking *p*. The fourth staff includes a third ending bracket labeled '3' and dynamic marking *mf* and *ff*. The fifth staff includes a tempo change to 'Tempo 2' and 'poco rit.'. Measure numbers 13, 19, and 29 are indicated. The section ends with a double bar line and the word 'Attacca'.

Attacca No. 4

Attacca subito

Canción del amor dolido.

Allegro (♩=160)

4 3 3 3

mf

17 [A] 2

p

24 *colla voce* rit. [B] a tempo 3

mf *f* *mf*

32 3 2 3

mf *mf*

43 [C] 2 4

mf

52 [D] Più mosso

f *f*

56 rit. *colla voce* [E] a tempo

f *f* *pp*

61 Pour enchaîner avec la suite au No. 4 *poco rit.* Calmo e misterioso Pour terminer avec la Chanson sans enchaîner la suite *poco rit.*

3 2 5

attacca subito No.4

ff ————— >

El Círculo Mágico.
Romance del Pescador.

Andante molto tranquillo. (♩=44)

TACET



A Media noche. Los Sortilegios.

Lento e lontano. (♩=72)

TACET



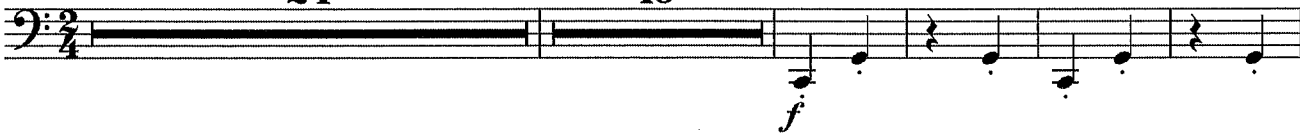
Danza ritual del Fuego. (Para ahuyentar los malos espíritus)

Allegro ma non troppo e pesante (♩=126)

24

16

25



45



53

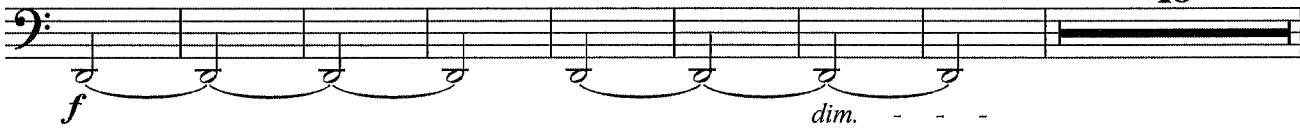
26

15



75

16



99

27



104

8



115

28



120

13

29

21



157 **30** **16** **31**

179

187 **32** **15**

207 **16**

231 **33** Poco a poco affrettando, ma non troppo.

237

243 **34** Vivo, ma giusto.

248

253 **35** **ff sempre**

260



267



Poco moderato. (♩=69)

Escena.

FAGOT

6:9