

# El amor brujo

Manuel de Falla

## Introducción y Escena.

**Allegro furioso ma non troppo vivo.** (♩=132)

Cl. in La

Musical score for the first section of 'El amor brujo'. It consists of three staves of music in 3/4 time. The first staff starts with a dynamic of *f* and *ff*, and includes the instruction *sempre simile*. The second staff begins at measure 7. The third staff begins at measure 12 and includes the instruction *Attacca* at the end.

## En la Cueva. La noche.

**1** Tranquillo e misterioso (♩=72)

Solo

Musical score for the second section of 'El amor brujo'. It consists of three staves of music in 3/4 time. The first staff starts with a dynamic of *f* and *dim.*, and includes the instruction *Solo*. The second staff begins at measure 29 and includes the instruction *mf* and *ff*. The third staff begins at measure 41 and includes the instruction *Tempo* and *poco rit.*. The section concludes with the instruction *Attacca No. 4* and *Attacca subito*.

## Canción del amor dolido.

**Allegro** (♩=160)

Musical score for the third section of 'El amor brujo'. It consists of two staves of music in 3/4 time. The first staff starts with a dynamic of *mf*. The second staff begins at measure 13 and includes the instruction *A*.

21 *colla voce* **B** a tempo *f*

31 *mf*

39 *mf* **C**

47 **D** Più mosso **E** a tempo *pp*

Pour enchaîner avec la suite au No. 4

61 *poco rit.* **Calmo e misterioso** *pp* *poco* *pp* attacca subito No.4

Pour terminer avec la Chanson sans enchaîner la suite

67 *poco rit.* Solo *pp* *poco* *pp*

El Círculo Mágico.  
Romance del Pescador.

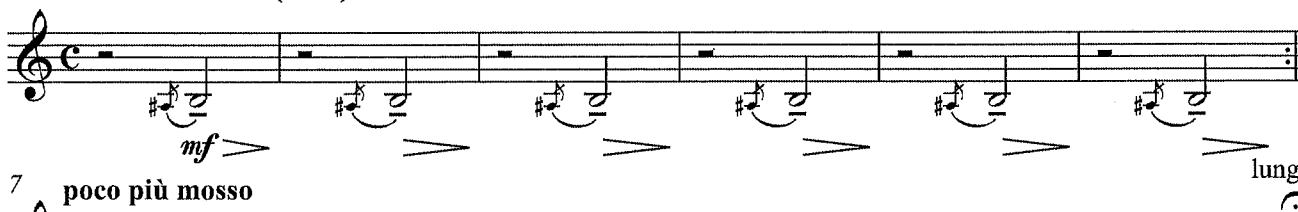
Andante molto tranquillo. (♩=44)

TACET



A Media noche.  
Los Sortilegios.

Lento e lontano. (♩=72)



7 poco più mosso



# Danza ritual del Fuego.

(Para ahuyentar los malos espíritus)

Allegro ma non troppo e pesante (♩=126)

4 *tr*

*f* *pp*

10 *tr* *tr* *tr* *tr*

*mf* *mf* *mf* *mf*

18 *tr* *tr* *tr* *tr* 24

*mf* *mf* *mf* *mf*

26 *tr* *tr* *tr* *tr* 3

*mf* *mf* *mf* *mf*

33 3

*mf*

38 25 *tr* *b* 3 3

*f* *f* *ff sempre*

46 3 3 3 3

*mf*

53 3 3 3 3 26 8

*mf*

67 *pp* 15

*pp*

90

*mf* *p* *f dim. molto*

99 **27**

*pp* *ff* *dim.* *pp*

105 **28**

*ff* *dim.* *pp* *ff*

118

*dim.* *pp* *ff* *dim.*

125

*mf* *p* *morendo*

136 **29**

*mf* *pp* *trill*

148

*mf* *pp* *sempre simile*

156 **30**

*mf* *pp* *trill*

164

*mf*

169 **31**

*f* *f* *ff*

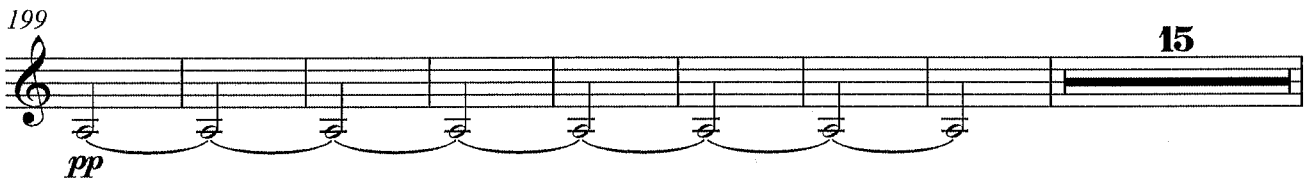
176



184



199



*pp*

222



*mf* *p* *f dim.*

231 **33** Poco a poco affrettando, ma non troppo.



*p cresc.* *f* *mf cresc.*

237



*sf* *sf*

245 **34** Vivo, ma giusto.



*ff*

252

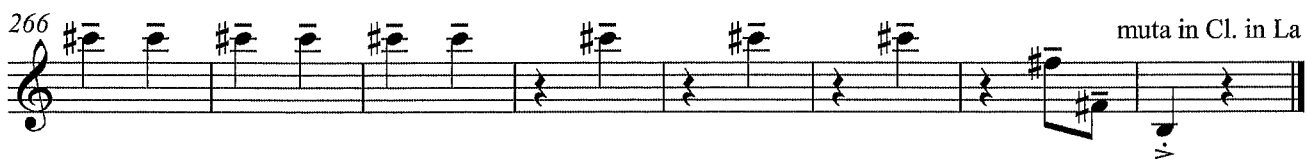


257 **35**



*ff sempre*

266



*muta in Cl. in La*